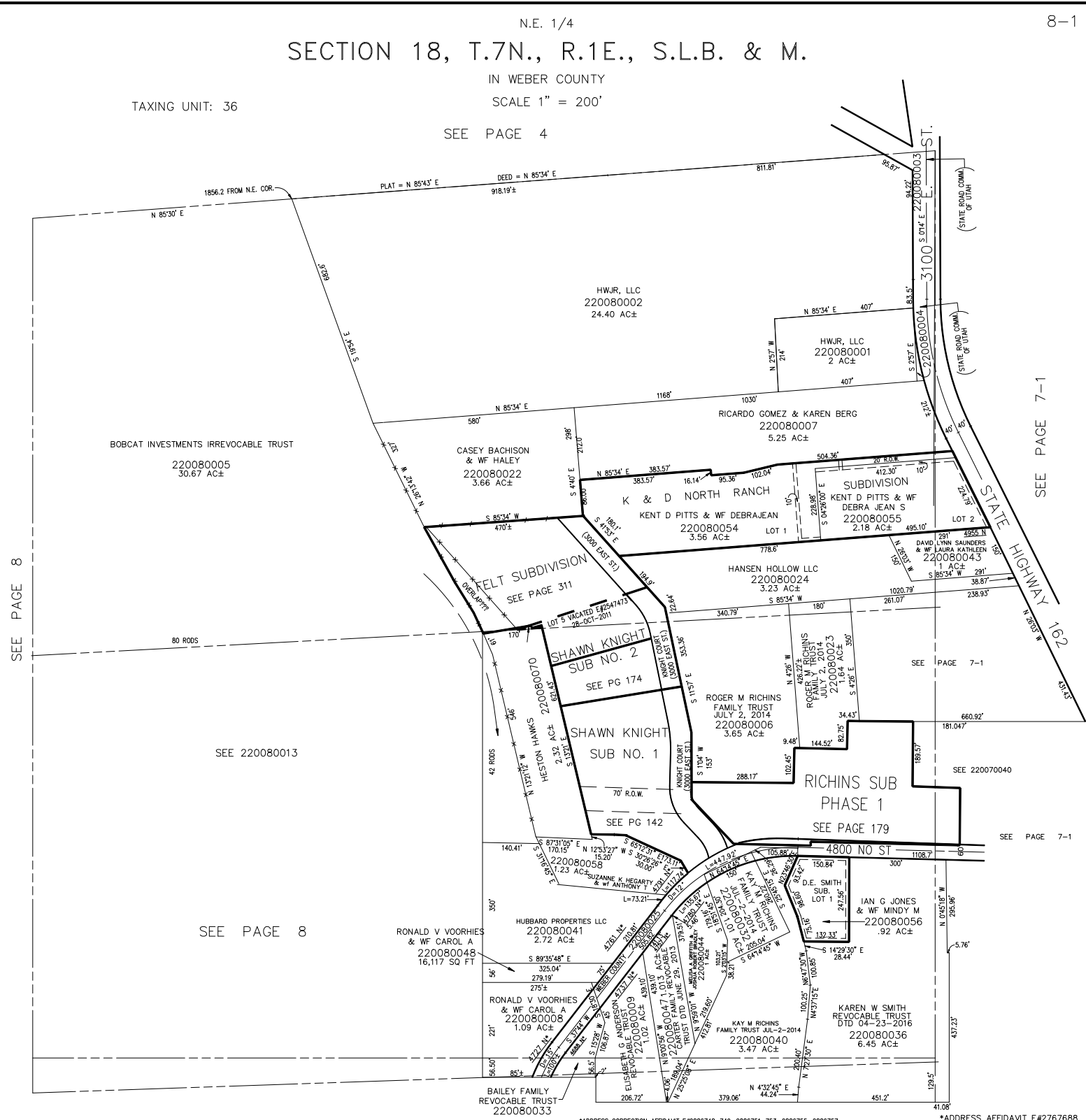


SECTION 18, T.7N., R.1E., S.L.B. & M.

IN WEBER COUNTY
SCALE 1" = 200'

TAXING UNIT: 36

SEE PAGE 4



SEE PAGE 8

SEE PAGE 7-1

SEE PAGE 8

SEE PAGE 7-1

SEE PAGE 8

*ADDRESS CORRECTION AFFIDAVIT E#2886748-749, 2886751-753, 2886755, 2886757

*ADDRESS AFFIDAVIT E#2767688